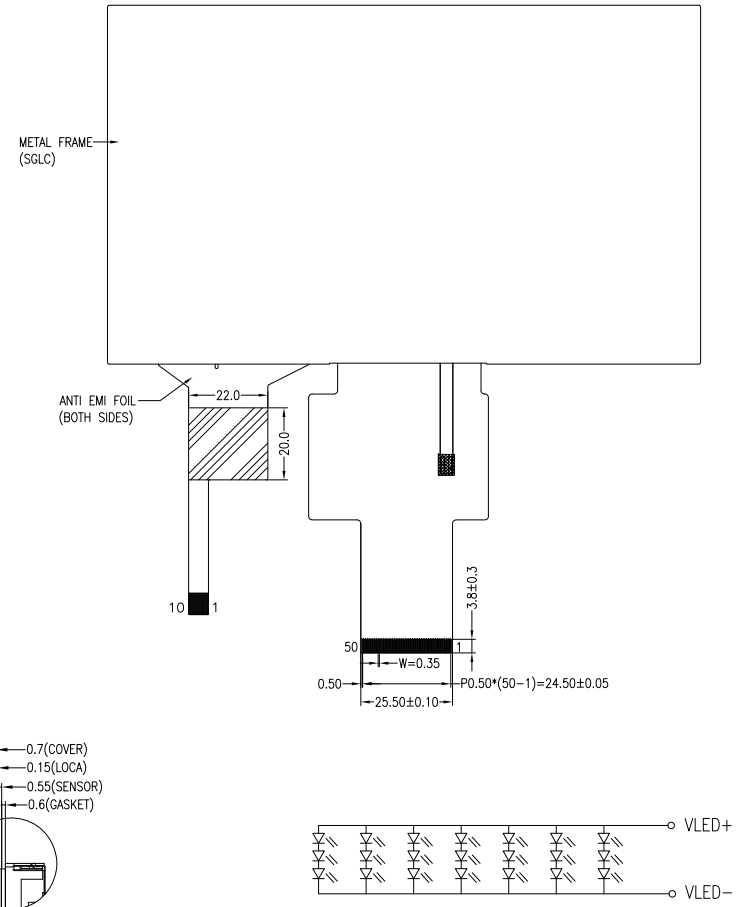
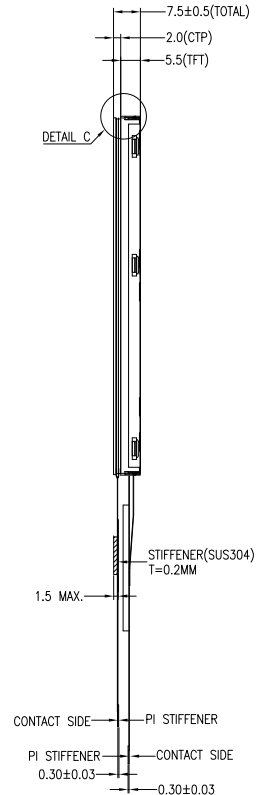
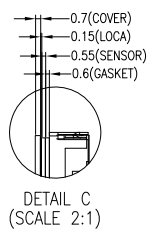
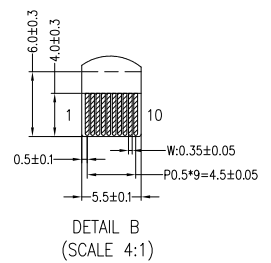
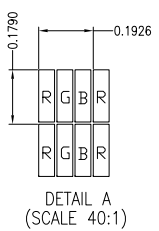
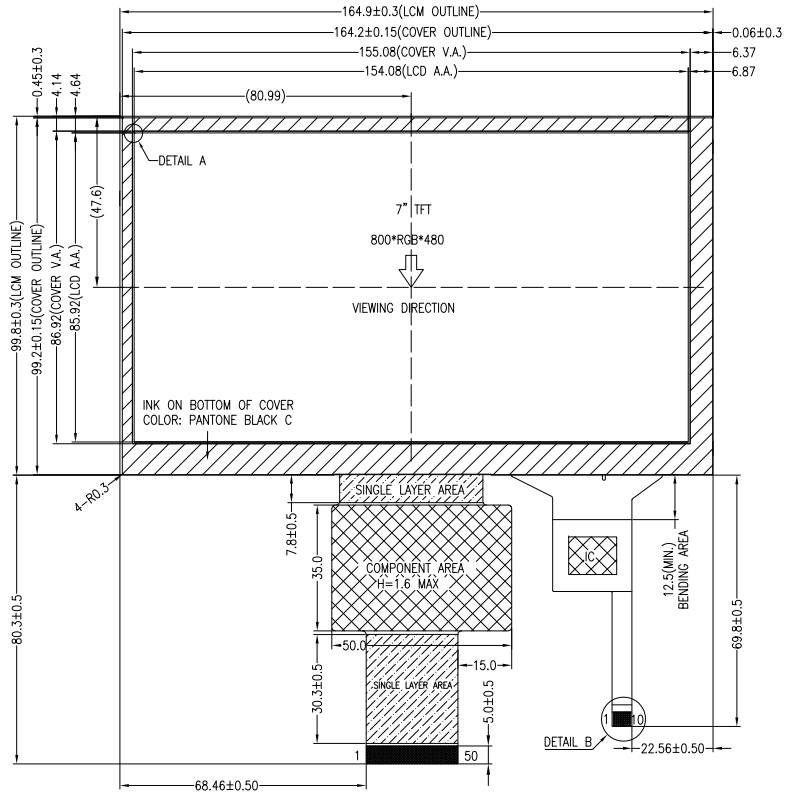


NO MECHANICAL HOUSING TO HOLD THE TFT AND THE TOUCH PANEL ON THIS PRODUCT, SO THE END UNIT'S MECHANICAL DESIGN MUST INCLUDE A HOUSING FOR PREVENTING THE SEPARATION OF THE TFT AND THE TOUCH PANEL.



BACKLIGHT CIRCUIT DIAGRAM

PIN ASSIGNMENT FOR LCM			
PIN	SYMBOL	PIN	SYMBOL
1	VLED+	26	G1
2	VLED+	27	G0
3	VLED-	28	R7
4	VLED-	29	R6
5	GND	30	R5
6	VCC	31	R4
7	VCC	32	R3
8	MODE	33	R2
9	DE	34	R1
10	VSYNC	35	R0
11	HSYNC	36	GND
12	B7	37	DCLK
13	B6	38	GND
14	B5	39	LR
15	B4	40	UD
16	B3	41	VCC
17	B2	42	VCC
18	B1	43	NC
19	B0	44	RESET
20	G7	45	NC
21	G6	46	NC
22	G5	47	DITHB
23	G4	48	GND
24	G3	49	NC
25	G2	50	NC

PIN ASSIGNMENT FOR CTP	
PIN	SYMBOL
1	VSS
2	VDD
3	SCL(SSEL)
4	NC(SCK)
5	SDA(MOSI)
6	NC(MISO)
7	/RST
8	NC
9	/INT
10	VSS

- NOTES FOR TFT:
1. DISPLAY TYPE: TFT, TRANSMISSIVE, NORMALLY WHITE
 2. OPERATING VOLTAGE: VCC=3.3V (TYP.)
 3. VIEWING DIRECTION: 12:00 O'CLOCK
 4. IC DRIVER: HX8264-E00+HX8664-B00 or EK9713CA+EK73002ACGB
 5. BACKLIGHT: 21-CHIP WHITE LED, If=140mA, Vf=9.6±1.2V
 6. TOP POLARIZER SURFACE TREATMENT: ANTI-GLARE

- NOTES FOR CTP:
1. 7.0 INCH PROJECTIVE CAPACITIVE TOUCH PANEL
 2. OPERATING VOLTAGE: VDD=3.3V
 3. COVER GLASS + SENSOR GLASS + FPCA
 4. RESOLUTION: 800 X 480 DOTS
 5. IC DRIVER: FT7311DQQ
 6. INTERFACE: IIC
 7. MULTI FINGER: UP TO 5
 8. HARDNESS OF COVER SURFACE: 7H
 9. FIRMWARE FILE: TBD

- OTHERS:
1. OPERATION TEMP.: -20°C ~ 70°C
 - STORAGE TEMP.: -30°C ~ 80°C
 2. SURFACE LUMINANCE: 400CD/M²(TYP.)(WITH CTP)
 3. ONLY THE SINGLE LAYER AREA ON FPC IS BENDABLE AND THE MINIMUM BEND RADIUS IS 1.5MM
 4. GENERAL TOLERANCE: ±0.3MM
 5. ROHS COMPLIANT

MIT MULTI-INNO TECHNOLOGY CO., LTD.

DRAWN BY:	RITA	2023.12.08		MODULE P/N:
CHECKED BY:			SCALE : 1/1	MI0700S6T-13CP1A
APPROVED BY:			UNIT: mm	DESCRIPTION:
VER.	01	FIRST ISSUE	SHEET NO.: 1/1	TFT + CTP MODULE

01	FIRST ISSUE	RITA	2023.12.08
VER.	REVISED DESCRIPTION	REVISER	DATE